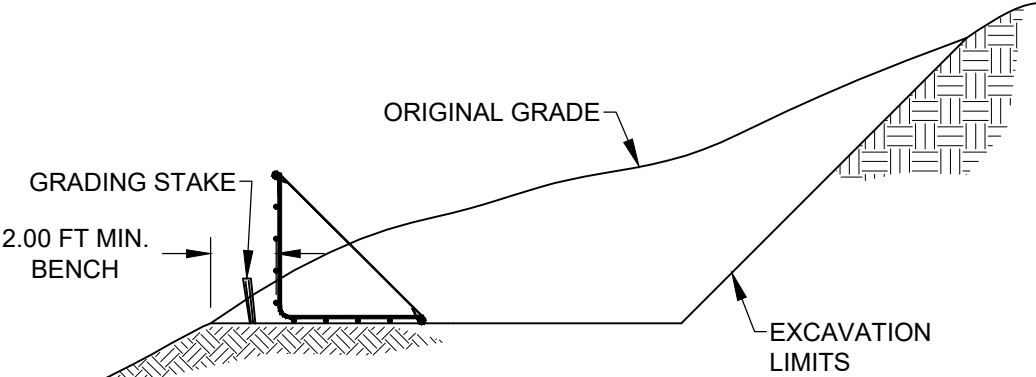
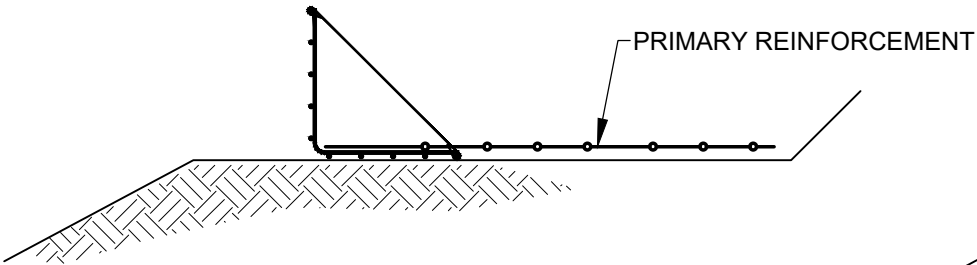


- EXCAVATE FOR LEVEL BASE TO A LENGTH ADEQUATE FOR REINFORCEMENT EMBEDMENT.
- SET GRADING STAKES AT A 0.50 FT OFFSET TO FACILITATE PROPER BASKET ALIGNMENT.
- EMBED BOTTOM BASKET AT FACE OF WALL AS SHOWN ON WALL PROFILE.



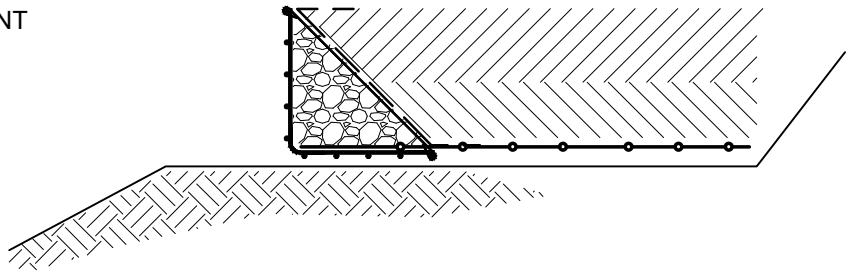
STEP 1

- PLACE PRIMARY SOIL REINFORCEMENT AT ELEVATIONS AS SHOWN IN PROFILE DRAWING AND STOP AT THE FACE OF THE FORM.
- INSTALL STRUTS AT REQUIRED SPACING (2-FT MAX).



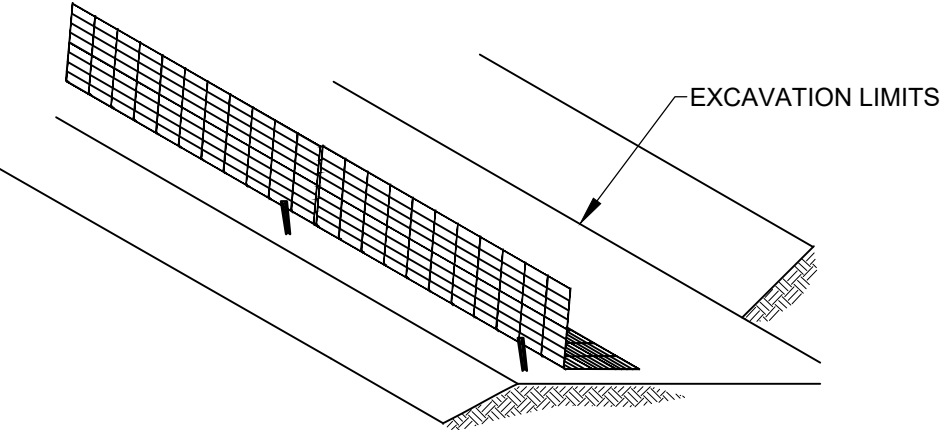
STEP 3

- BACKFILL CAREFULLY TO ABOUT 1" - 2" ABOVE THE TOP HORIZONTAL BASKET WIRE OR AS REQUIRED BY SPECIFICATION.
- REINFORCED FILL COMPACTED LIFTS SHOULD BE A MAXIMUM OF 9".
- COMPACT TO REQUIRED DENSITY.
- FOLD FILTER FABRIC OVER COMPACTED BACKFILL.



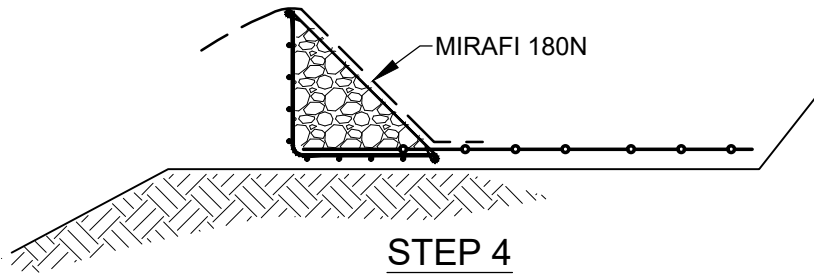
STEP 5

- FOR THE FIRST COURSE OF THE WALL, ALIGN BASKETS WITH 0.33 FT OVERLAP.
- INSTALL STRUTS AT MAXIMUM 2.00 FT SPACING, OR AS REQUIRED.



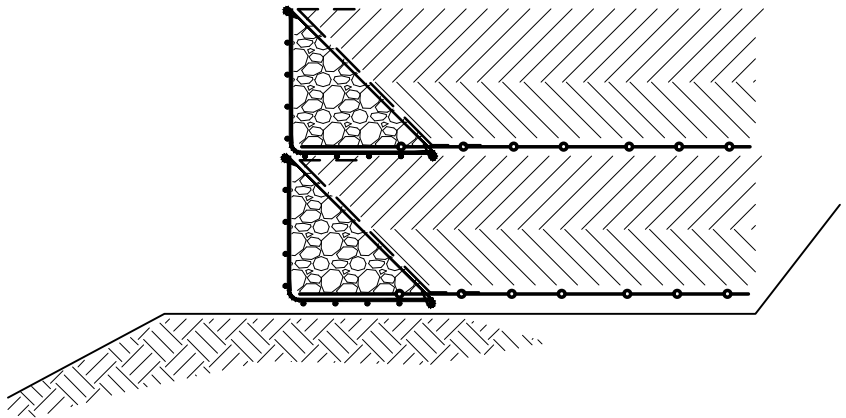
STEP 2

- PLACE ROCK FACE FILL AS SHOWN.
- COMPACT TO REQUIRED DENSITY.
- PLACE GEOTEXTILE (MIRAFI 180N) AS SHOWN ALLOWING FOR TOP AND BOTTOM EMBEDMENT OF 12".



STEP 4

- INSTALL NEXT BASKET COURSE IN A RUNNING BOND CONFIGURATION (STAGGERED).
- REPEAT STEPS 2 THRU 5 UNTIL DESIRED HEIGHT OF WALL IS REACHED.



STEP 6

©2019 TENCATE GEOSYNTHETICS



365 SOUTH HOLLAND DRIVE
PENDERGRASS, GEORGIA 30567
TEL: (706) 693-2226
WWW.TENCATEGEO.US

NOTE: THE STANDARD DETAILS ILLUSTRATED IN THESE DRAWINGS ARE FOR INFORMATION AND EVALUATION PURPOSES ONLY AND ARE NOT FOR CONSTRUCTION. PROJECT SPECIFIC CALCULATIONS, SHOP DRAWINGS AND SPECIFICATIONS, SIGNED AND SEALED BY A STATE REGISTERED LICENSED ENGINEER, ARE REQUIRED FOR CONSTRUCTION.

WELDED WIRE MESH (WWM) FORM
MSE WALL
STANDARD DESIGN DETAILS

STANDARD DETAIL
NOT FOR CONSTRUCTION

DATE : 9/24/19

INSTALLATION
STEPS - ROCK
FACE WALL

SHEET
W14

OF
14