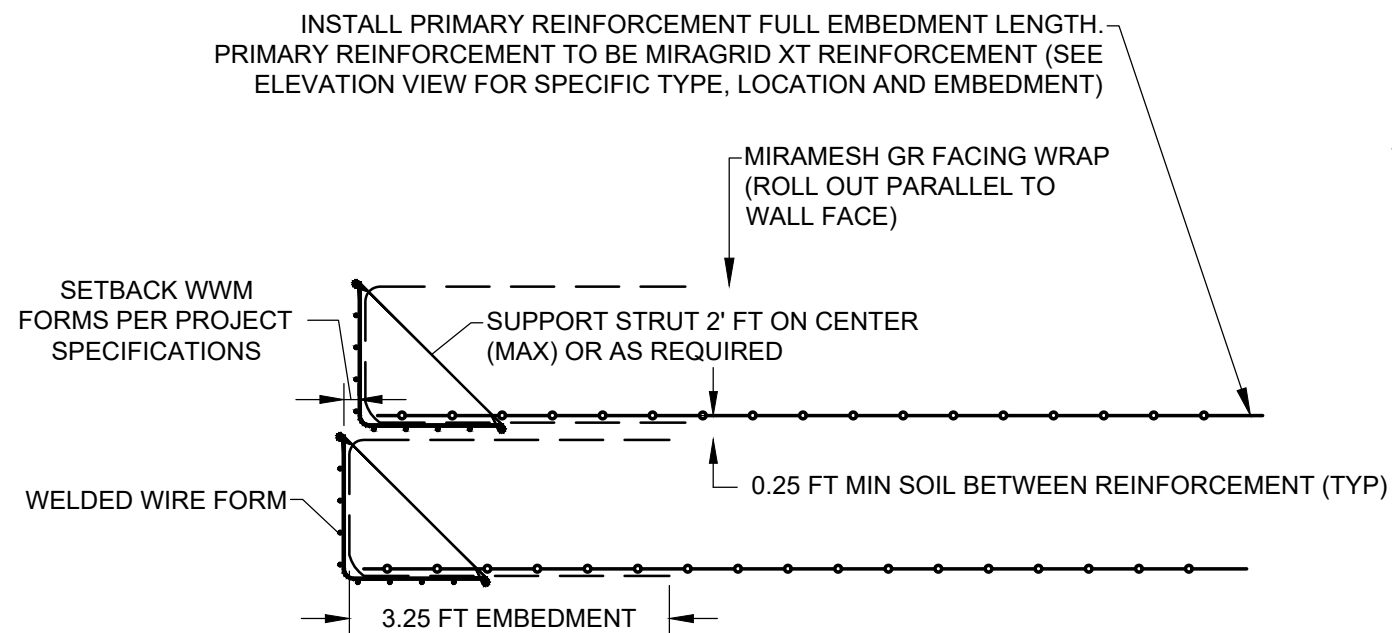
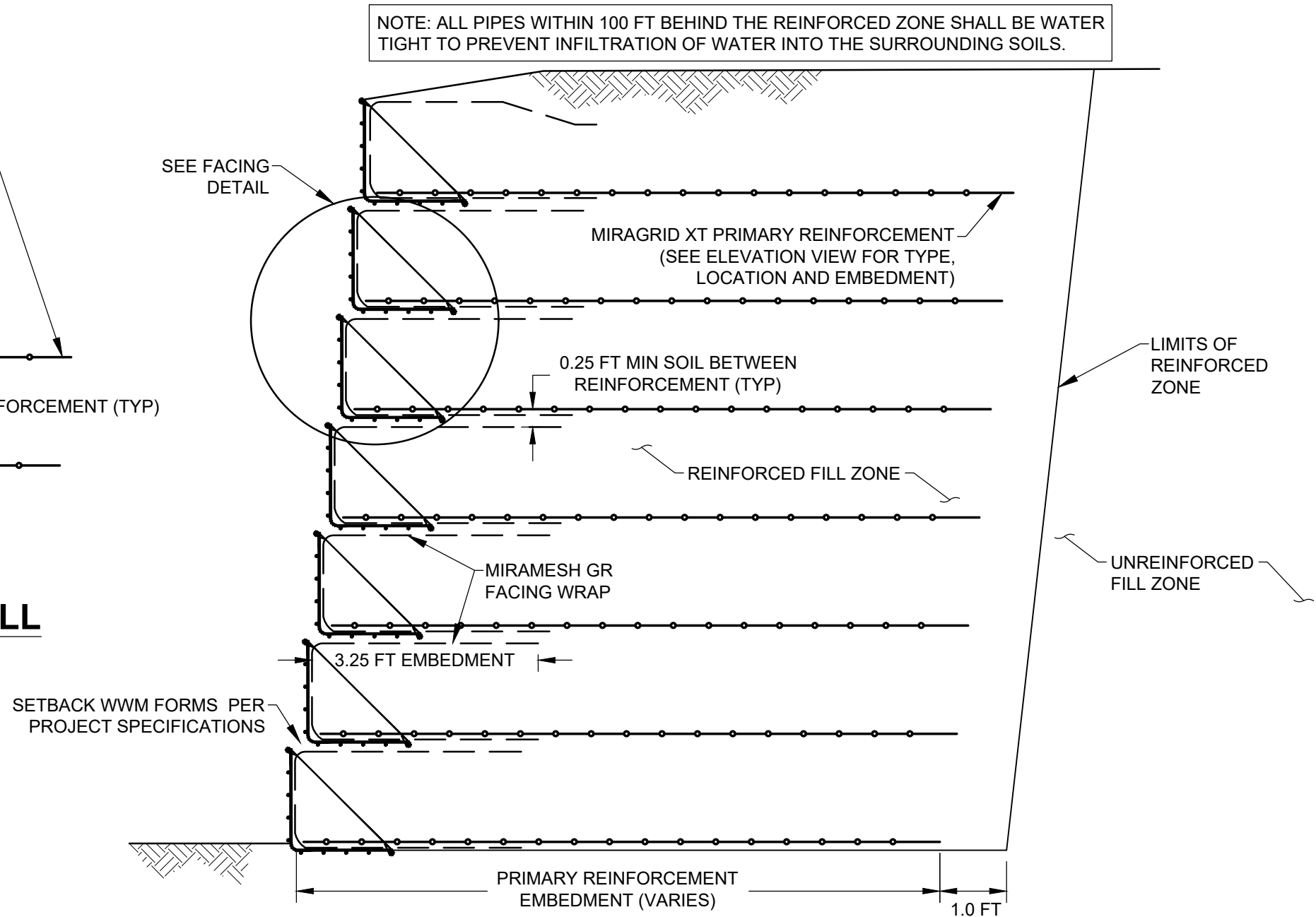


©2019 TENCATE GEOSYNTHETICS



FACING DETAIL - PERMANENT WALL
(SCALE: 1" = 2'-0")



NOTE: FOUNDATION REMEDIATION AS REQUIRED BY ON-SITE GEOTECHNICAL ENGINEER TO OBTAIN STABLE WORKING PLATFORM MEETING THE PARAMETERS IN THE PROJECT SPECIFICATIONS. VERIFICATION OF BEARING CAPACITY MUST BE SUBMITTED BY THE ON-SITE GEOTECHNICAL ENGINEER PRIOR TO CONSTRUCTION.

TYPICAL WWM MSE WALL (OFFSET) CROSS SECTION - PERMANENT WALL
(SCALE: 1" = 2'-0")

TENCATE
GEOSYNTHETICS

365 SOUTH HOLLAND DRIVE
PENDERGRASS, GEORGIA 30567
TEL: (706) 693-2226
WWW.TENCATEGEO.US

NOTE: THE STANDARD DETAILS ILLUSTRATED IN THESE DRAWINGS ARE FOR INFORMATION AND EVALUATION PURPOSES ONLY AND ARE NOT FOR CONSTRUCTION. PROJECT SPECIFIC CALCULATIONS, SHOP DRAWINGS AND SPECIFICATIONS, SIGNED AND SEALED BY A STATE REGISTERED LICENSED ENGINEER, ARE REQUIRED FOR CONSTRUCTION.

WELDED WIRE MESH (WWM) FORM MSE WALL STANDARD DESIGN DETAILS			
STANDARD DETAIL NOT FOR CONSTRUCTION	PERMANENT WWM WALL - OFFSET	SHEET	OF
		W6	14
DATE : 9/24/19			