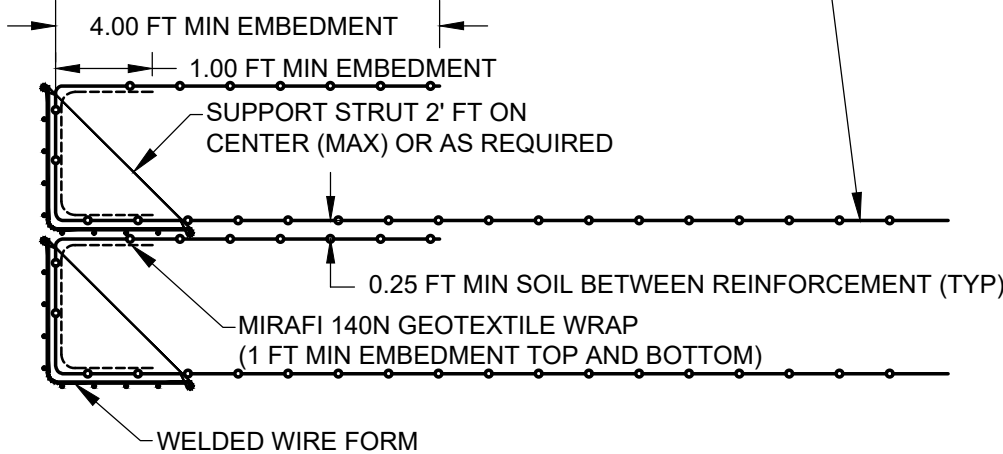


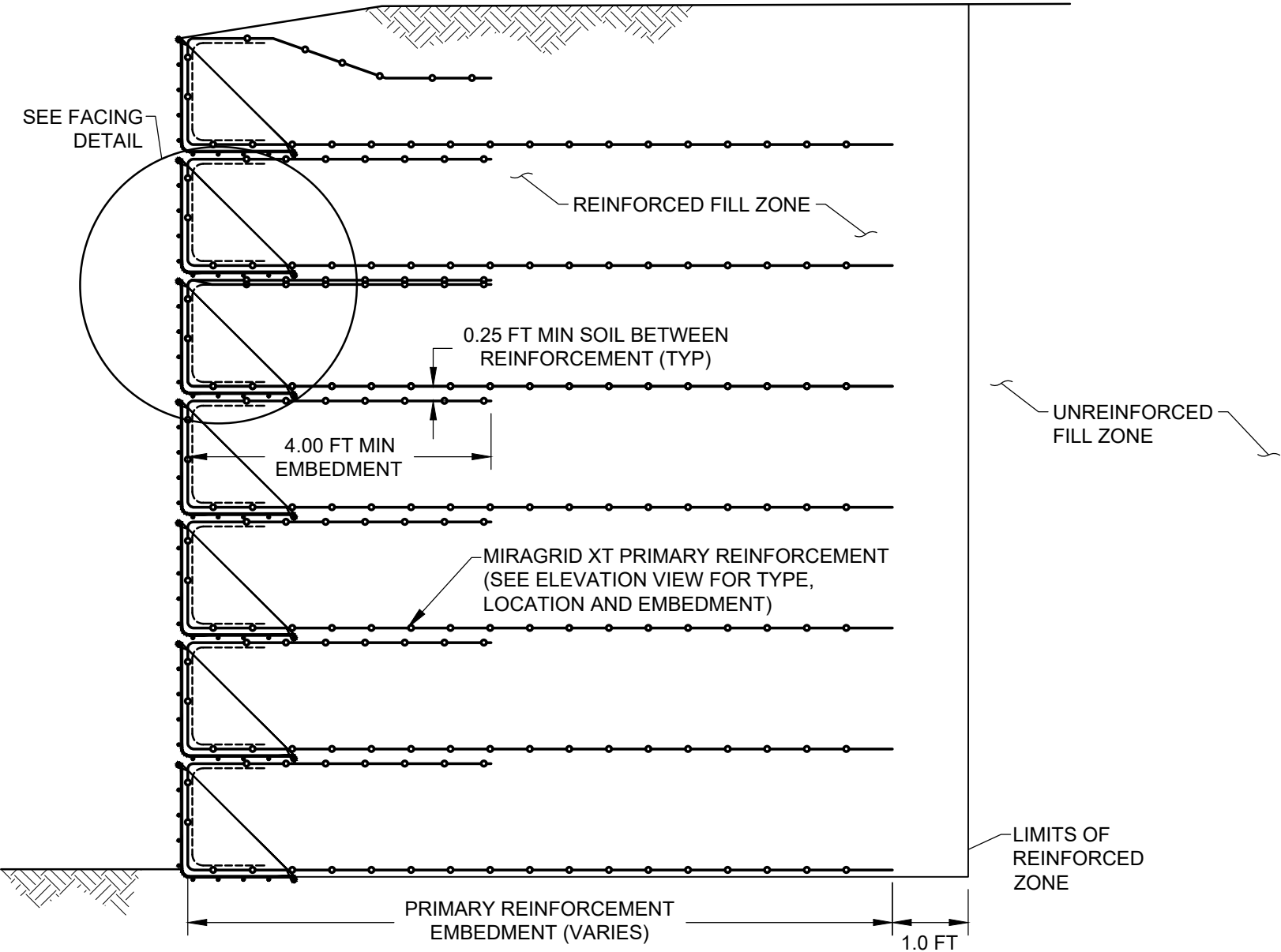
©2019 TENCATE GEOSYNTHETICS

INSTALL PRIMARY REINFORCEMENT FULL EMBEDMENT LENGTH. WRAP UP BASKET FACE AND EXTEND BACK 4'-0" (MIN.). PRIMARY REINFORCEMENT TO BE MIRAGRID XT REINFORCEMENT. SEE ELEVATION VIEW FOR SPECIFIC TYPE, LOCATION AND EMBEDMENT



FACING DETAIL - TEMPORARY WALL (VERTICAL)
(SCALE: 1" = 2'-0")

NOTE: ALL PIPES WITHIN 100 FT BEHIND THE REINFORCED ZONE SHALL BE WATER TIGHT TO PREVENT INFILTRATION OF WATER INTO THE SURROUNDING SOILS.



NOTE: FOUNDATION REMEDIATION AS REQUIRED BY ON-SITE GEOTECHNICAL ENGINEER TO OBTAIN STABLE WORKING PLATFORM MEETING THE PARAMETERS IN THE PROJECT SPECIFICATIONS. VERIFICATION OF BEARING CAPACITY MUST BE SUBMITTED BY THE ON-SITE GEOTECHNICAL ENGINEER PRIOR TO CONSTRUCTION.

TYPICAL WWM MSE WALL (VERTICAL) CROSS SECTION - TEMPORARY WALL
(SCALE: 1" = 2'-0")

**TENCATE**
GEOSYNTHETICS

365 SOUTH HOLLAND DRIVE
PENDERGRASS, GEORGIA 30567
TEL: (706) 693-2226
WWW.TENCATEGEO.US

NOTE: THE STANDARD DETAILS ILLUSTRATED IN THESE DRAWINGS ARE FOR INFORMATION AND EVALUATION PURPOSES ONLY AND ARE NOT FOR CONSTRUCTION. PROJECT SPECIFIC CALCULATIONS, SHOP DRAWINGS AND SPECIFICATIONS, SIGNED AND SEALED BY A STATE REGISTERED LICENSED ENGINEER, ARE REQUIRED FOR CONSTRUCTION.

WELDED WIRE MESH (WWM) FORM MSE WALL STANDARD DESIGN DETAILS			
STANDARD DETAIL NOT FOR CONSTRUCTION	TEMPORARY WWM WALL - VERTICAL	SHEET	OF
		W4	14
DATE : 9/24/19			