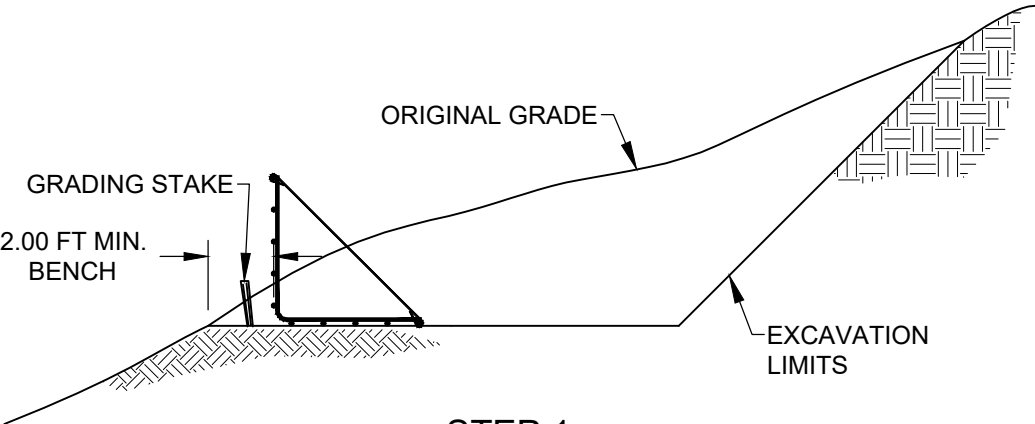
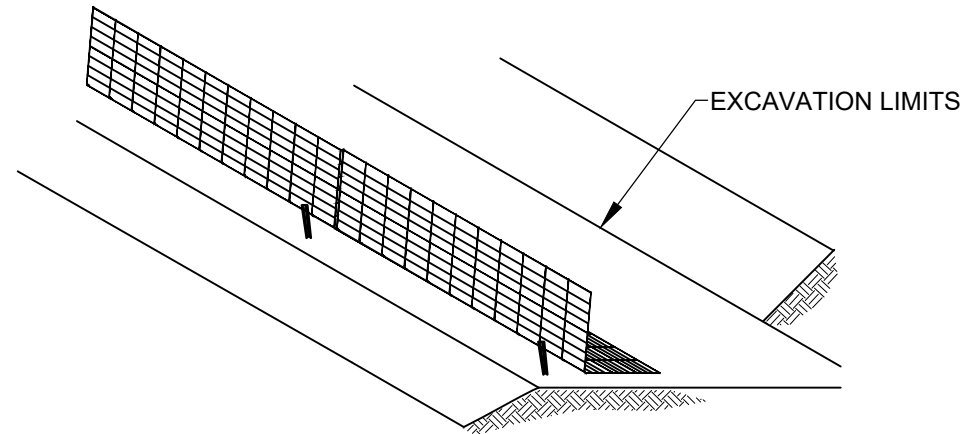


- EXCAVATE FOR LEVEL BASE TO A LENGTH ADEQUATE FOR REINFORCEMENT EMBEDMENT.
- SET GRADING STAKES AT A 0.50 FT OFFSET TO FACILITATE PROPER BASKET ALIGNMENT.
- EMBED BOTTOM BASKET AT FACE OF WALL AS SHOWN ON WALL PROFILE.



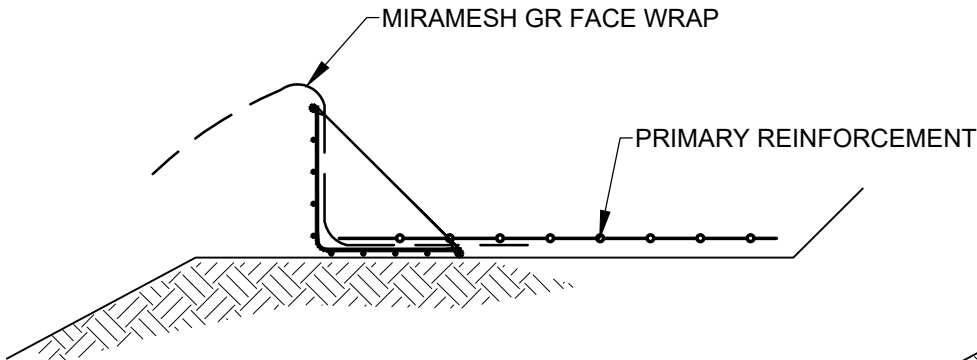
STEP 1

- FOR THE FIRST COURSE OF THE WALL, ALIGN BASKETS WITH 0.33 FT OVERLAP.
- INSTALL STRUTS AT MAXIMUM 2.00 FT SPACING, OR AS REQUIRED.



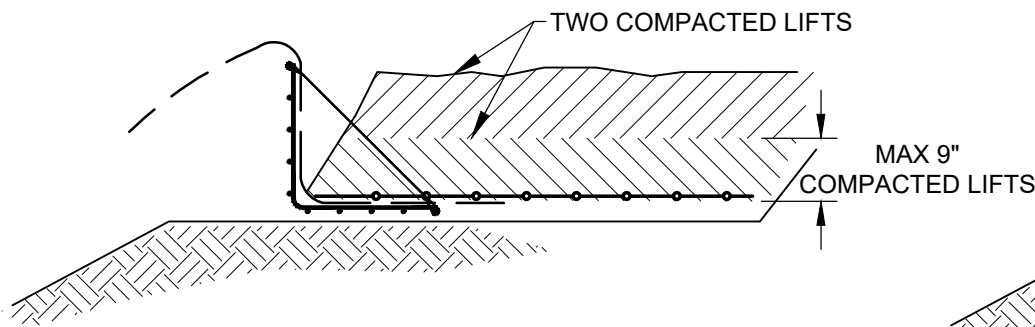
STEP 2

- PLACE MIRAMESH GR FACING WRAP. BOTTOM EMBEDMENT VARIES DEPENDING ON FACE BATTER, SEE CROSS CROSS SECTION FOR DETAILS. (MINIMUM BOTTOM EMBEDMENT VARIES, 2.50 FT TO 3.25 FT.)
- DRAPE MIRAMSH GR OVER BASKET ALLOWING FOR THE REQUIRED WRAP EMBEDMENT. TOP EMBEDMENT VARIES BASED ON FACE BATTER, SEE CROSS SECTION FOR DETAILS. ( MINIMUM TOP EMBEDMENT VARIES, 3.25 FT TO 4.00 FT.)
- PLACE PRIMARY SOIL REINFORCEMENT AT ELEVATIONS AS SHOWN IN PROFILE DRAWING AND STOP AT THE FACE OF THE FORM.
- INSTALL STRUTS AT REQUIRED SPACING (2-FT MAX).



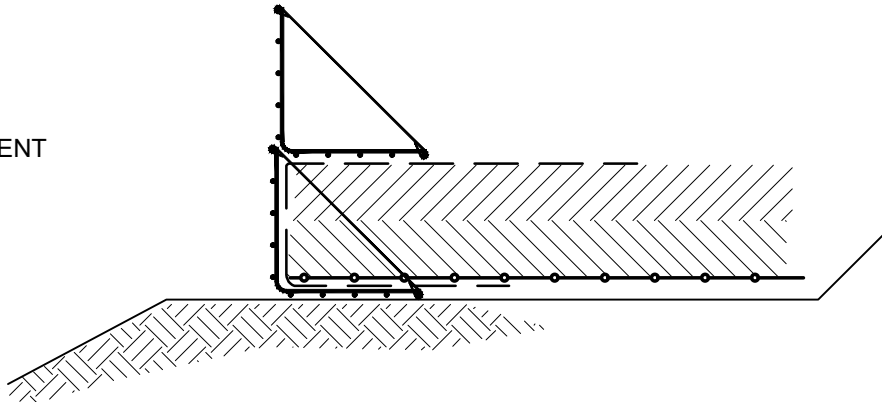
STEP 3

- BACKFILL CAREFULLY TO ABOUT 1" - 2" ABOVE THE TOP HORIZONTAL BASKET WIRE OR AS REQUIRED BY SPECIFICATION.
- COMPACTED LIFTS SHOULD BE A MAXIMUM OF 9".
- COMPACT TO REQUIRED DENSITY.



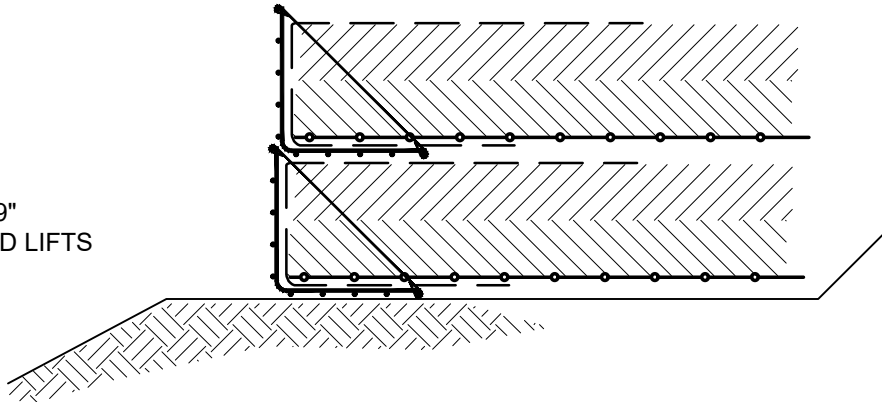
STEP 4

- PULL MIRAMESH GR FACING WRAP OVER COMPACTED FILL AND ANCHOR WITH SOIL.
- SLIDE THE NEXT BASKET BACK AGAINST THE LOWER BASKET USING RUNNING BOND INSTALLATION (STAGGERED).
- INSTALL SECOND COURSE OF WELDED WIRE FORM.



STEP 5

- REPEAT STEPS 2 THRU 5 UNTIL DESIRED HEIGHT OF WALL IS REACHED.



STEP 6



365 SOUTH HOLLAND DRIVE  
PENDERGRASS, GEORGIA 30567  
TEL: (706) 693-2226  
WWW.TENCATEGEO.US

NOTE: THE STANDARD DETAILS ILLUSTRATED IN THESE DRAWINGS ARE FOR INFORMATION AND EVALUATION PURPOSES ONLY AND ARE NOT FOR CONSTRUCTION. PROJECT SPECIFIC CALCULATIONS, SHOP DRAWINGS AND SPECIFICATIONS, SIGNED AND SEALED BY A STATE REGISTERED LICENSED ENGINEER, ARE REQUIRED FOR CONSTRUCTION.

**WELDED WIRE MESH (WWM) FORM  
MSE WALL  
STANDARD DESIGN DETAILS**

STANDARD DETAIL NOT FOR CONSTRUCTION	INSTALLATION STEPS - PERM. WWM WALL	SHEET W 13	OF 14
DATE : 9/24/19			