

## Case Study

**application** Subgrade Stabilization  
**location** SR-92; Lehi to Highland, UT  
**product** Mirafi® RS580i

**job owner** Utah Department of Transportation (UDOT)  
**contractor** Flatiron/Harper Joint Venture

TenCate™ develops and produces materials that function to increase performance, reduce costs and deliver measurable results by working with our customers to provide advanced solutions.

### THE CHALLENGE

Dennis Ashton, Project Manager with Flatiron Construction Corp., contacted ACF West, Inc. and requested information and suggestions on which products could be used to bridge soft soils on the SR-92 Project.

S.R. 92 is the main east-west corridor for the communities of Alpine, Highland, Cedar Hills and northeast Lehi, as well as the primary access road for American Fork Canyon. Thousands of vehicles travel this corridor every day for a variety of reasons: for access to and from I-15, local travel or recreational purposes. This area in northern Utah County is growing at a rapid pace. In order to improve mobility and accessibility, the Utah Department of Transportation (UDOT) is expanding S.R. 92 from I-15 to S.R. 74 (Alpine Highway) in Highland.

The challenge was finding a suitable product(s) that would help to stabilize soft spots and provide proper base stabilization to create a pavement section that would withstand future traffic.

Two options were recommended; TenCate's new, patent pending Mirafi® RS580i\* or a geogrid/separation fabric combination. With its high strength properties, Mirafi® RS580i was approved and requested for immediate installation to monitor its performance in a test strip.

### THE CONSTRUCTION

The installation consisted of spot stabilization as well as large section stabilization.



Preparation of subgrade.



Preparation of subgrade and start of Mirafi® RS580i placement.



Initial area where Mirafi® RS580i was tested.



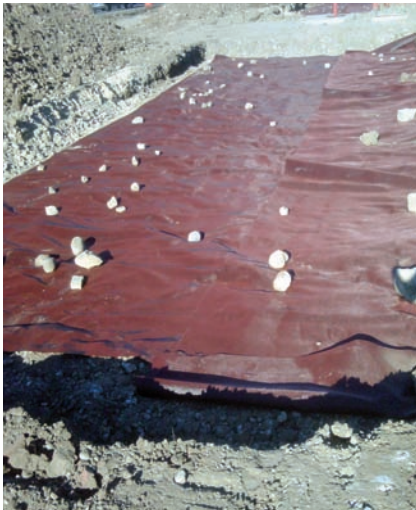
#### THE PERFORMANCE

The contractor encountered unexpected soft soils during the construction of the SR-92 project. Mirafi® RS580i was placed on the soft sub-grade and bridged the soft soils perfectly. Base material was brought up to final paving grade and proof rolled. The material performed very well and was a perfect fit in a difficult situation.

\*Patent Pending



Base material being spread on Mirafi® RS580i.



Mirafi® RS580i rolled out and seeded with base material.



Installation of Mirafi® RS580i on soft soil area.

TenCate™ Geosynthetics North America assumes no liability for the accuracy or completeness of this information or for the ultimate use by the purchaser. TenCate™ Geosynthetics North America disclaims any and all express, implied, or statutory standards, warranties or guarantees, including without limitation any implied warranty as to merchantability or fitness for a particular purpose or arising from a course of dealing or usage of trade as to any equipment, materials, or information furnished herewith. This document should not be construed as engineering advice.

Mirafi® is a registered trademark of Nicolon Corporation.

© 2010 TenCate Geosynthetics North America